



# PRODUCT RANGE Catalogue

EUREKA™ 

DEMONPADS

SHARK  
BINS

Tradies Choice

[nabclean.com.au](http://nabclean.com.au)





NAB Clean is an Australian, family-owned company based in Melbourne.

A wholesaler of cleaning products and equipment, NAB Marketing was established in 1998 by Nabih Merhi.

As a nationwide supplier in a highly competitive market, NAB's continued growth is due to superior personalised service and highly competitive pricing. We provide our customers with a large range of cleaning products, equipment and accessories. We believe in establishing and cultivating co-operative relationships with our customers in which we work together to ensure reliable supply and product quality

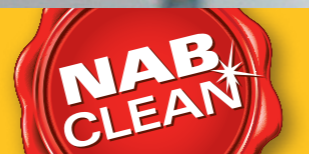


The Eureka business was first established in Melbourne in 1992 when the initial range of squeegees and washers were designed and the original tooling commissioned. Manufacturing commenced shortly after this and progressed to a full range of quality window cleaning equipment, developed for distribution throughout Australia. The original range included both brass and stainless steel squeegees, scrapers and aluminium telescopic poles and a wide variety of T-bar washers. Other lines were sourced including heavy duty brushes and water fed poles, plus general ancillary cleaning equipment. The most recent innovation has been the addition of the innovative "Quad Pro" aluminium squeegees with their 4 sided rubber and revolutionary release clip. All products are distributed around Australia and, with the advent of Quad Pro, are gaining new overseas markets. All this at prices you can afford, to do a professional cleaning job.



**The Professional's Choice**

[nabclean.com.au](http://nabclean.com.au)



## Contents

Air Fresheners	04
Bins	08
Brooms	12
Brushware - General	14
Brushware - Toilet	15
Buckets	16
Caution Signs	18
Cloths and Wipes	19
Paper Dispensers	24
Soap Dispensers	28
Dusters	30
Floor Squeegees	32
Demon Floor Pads	33
Handles	35
Lobby and Dust Pans	36
Mops	37
Sponges and Scourers	39
Sprayers	42
Trolleys	45
Equipment	46
Eureka Clean	48
3M Range	56
Other	59







## AIR FRESHENER SPRAY

CTN QTY: 24

- Economical
- Provides a long lasting clean fragrance
- Approx 3000 sprays
- Use with our Automatic Air Freshener Dispenser **AFDS1**
- Alcohol Based

Citrus	FRESH-CIT
Jasmine	FRESH-JAS
Lavender and Chamomile	FRESH-LC
Fresh Linen	FRESH-FL
Musk	FRESH-MUSK
Ocean	FRESH-OC
Ck	FRESH-CK



## AIR FRESHENER SPRAY

CTN QTY: 12

- Long lasting oil based spray
- Use with our Automatic Air Freshener Dispenser **AFDS1**
- Approx 3000 sprays
- Oil Based

Jasmine	AFS-J
Lemon Lime	AFS-L
Opium	AFS-OP
Orchard	AFS-O
Passion	AFS-P



## AIR FRESHENER 300ML

CTN QTY: 24

- Provides a long lasting clean fragrance
- Contains natural aromatic extracts

Jasmine	AIR-JAS
Lavender	AIR-LAV
Fresh Linen	AIR-LIN



## AIROMA BURST 750ML

CTN QTY: 6

- Powerful spray action one burst of fragrance can reach areas up to 1000m .
- The large nozzle creates a short and powerful burst to fragrance a room instantly, suitable for large areas.
- It can also be sprayed on to fabrics for a fresh long-lasting fragrance

Exotic	BURST-R-EX
Floral	BURST-R-FL



## AUTOMATIC AIR FRESHENER DISPENSER

CTN QTY: 30

CODE: AFDS1

- Adjustable intermittent sprays 5 to 25 minutes
- Day, night or 24 hour light sensor modes
- Use with our **FRESH** or **AFS** air freshener cans
- H. 23 x L. 8 x W. 7cm



## LCD AIR FRESHENER DISPENSER

CTN QTY: 30

CODE: AFDLCD

- Adjustable intermittent spray
- LED Display
- Adjustable spray interval setting
- Low battery indicator
- Service reminder function
- Use with **FRESH** or **AFS** air freshener cans
- H. 23.3 x L. 8 x W. 8.8 cm



## STAINLESS STEEL CLEANER

CTN QTY: 12

CODE: SSCNAB

- Cleans and polishes
- Removes fingerprints and leaves a streak free finish

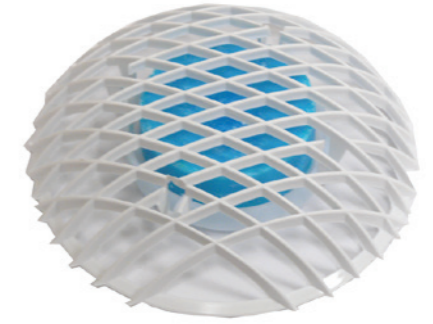


## SANITISER SPRAY

CTN QTY: 24

CODE: SSA

- Able to sanitise and disinfect difficult to reach or intricate areas
- Neutralises odours in the air
- 75% Alcohol
- Kills 99.9% of germs
- Refreshing citrus fragrance
- 500ml

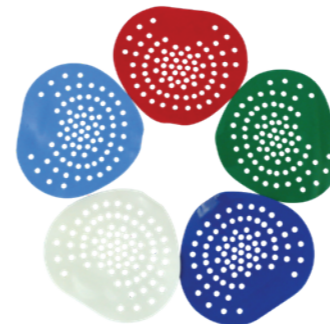


## URINAL DEODORANT CLEANER

CTN QTY: 10

CODE: UDC

- Perfect for urinals
- Easy to install



## URINAL DEODORANT CLEANER

CTN QTY: 50

- Suitable for all water fed troughs/urinals
- Lasts up to 1500 flushes

Bubblegum	UFSB
Mint	UFSLB
Citrus	UFSW
Apple	UFSG
Cherry	UFSR



## URINAL BIO TABS

CTN QTY: 12

CODE: UBT

- Perfect for urinals
- Lasts up to 6 times as long as regular urinal blocks
- Safe to use
- Contain no harmful Paradichlorobenzene



## GEL AIR FRESHENER

CTN QTY: 24

- Simple yet effective means of eliminating odour
- Versatile dispenser allows you to control the intensity by raising the coloured top cap or raising the dome from its base
- 210g

Lemon	AZ1017
Lime	AZ1017L



**TCELLS**

CTN QTY: 6

The Rubbermaid Commercial TCell™ odour control system utilizes passive fuel cell technology to deliver precise, timed fragrance of consistent odour control.

**DISPENSER** 1793547-NAB

**REFILLS**

Wakening Spring	402110-NAB
Blue Splash	402112-NAB
Citrus	402113-NAB

**PYSTOP**

CTN QTY: 12

CODE: PYSTOP

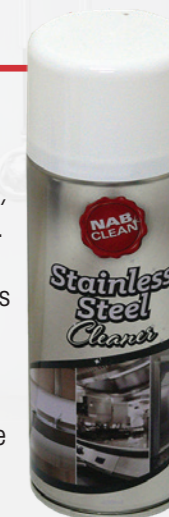
- Rapid action immobilizes and kills insects quickly
- Environmentally friendly, degrades easily
- Low toxicity, safe for use around humans and warm blooded animals
- **Australian Made**
- Can be used handheld or in our Automatic dispenser AFDS1 and has approximately 3000 sprays
- 150g Net with 14 g/kg Pyrethrum



# STAINLESS STEEL CLEANER

(SSCNAB)

Our stainless-steel cleaner is perfectly made to clean and polish stainless steel, aluminum, chrome and laminated surfaces. It has a high gloss streak free formula that removes fingerprints and grime while leaving behind a coating that helps prevent future grime build up. It partners perfectly with our NAB Microfibre range to get the best results.



# SANITISER SPRAY

(SSA)

Our sanitiser spray made with 75% alcohol works on hard or soft surfaces making it an essential tool when disinfecting. The spray can reach difficult or intricate area to help stop the spread of germs even in inaccessible areas. It neutralizes odours in the air and replaces them with a refreshing citrus fragrance while killing 99.9% of germs. There is no need to wipe just spray and let it dry.







SHARK 120L



- Heavy-Duty plastic bin with solid built in handles
- Built from commercial grade polypropylene
- Available with 3 different types of lid applications
- Base comes with heavy-duty castors for easy manoeuvrability

Complete Unit (Base, Dolly and Lid)	Code
Flat lid	BIN120FL/C
Funnel Lid	BIN120FU/C
Swing Lid	BIN120S/C

SHARK 76L



- Heavy-Duty plastic bin with solid built in handles
- Built from commercial grade polypropylene
- Available with 3 different types of lid applications
- Base comes with heavy-duty castors for easy manoeuvrability

Complete Unit (Base, Dolly and Lid)	Code
Flat lid	BIN76FL/C
Funnel Lid	BIN76FU/C
Swing Lid	BIN76S/C



**RUBBISH BIN**  
CTN QTY: 5

- Lockable flat top lid
- Durable heavy-duty plastic
- Suitable for indoor/ outdoor waste

75 Litres	H.57 x D.50cm	<b>RB75L</b>
55 Litres	H.52 x D.46cm	<b>RB55L</b>



**20L FLIP TOP LID TIDY BIN**  
CTN QTY: 8 CODE: TB20

- Grey gloss finish
- 20 litres capacity
- H. 46 x L. 29.5 x W.29.5 cm



**80L PUSH IN LID RUBBISH BIN**  
CTN QTY: 6 CODE: RB80

- Heavy-Duty plastic with push-in lid
- 80 litres capacity
- H.76 x D.44cm



WHEELIE BINS

- Complies with EN840 and AS4123
- Internal concave floor assists emptying

Colour	80 Litres	120 Litres	240 Litres
Black	WB80BK	WB120BK	WB240BK
Nature Green	WB80NGREEN	WB120NGREEN	WB240NGREEN
Dark Green	WB80GREEN	WB120GREEN	WB240GREEN
Grey	WB80GREY	WB120GREY	WB240GREY
Blue	WB80BLUE	WB120BLUE	WB240BLUE
Yellow	WB80YELLOW	WB120YELLOW	WB240YELLOW
Red	WB80RED	WB120RED	WB240RED
Lime Green	WB80LGREEN	WB120LGREEN	WB240LGREEN



**HANDS FREE WHEELIE BINS**

CTN QTY: 1

- Foot pedal operation allows no touch lid operation
- Heavy-duty Construction
- UV Resistant Material
- Green

120L	<b>WB120GPB</b>
240L	<b>WB240GPB</b>



**30L FLIP TOP TIDY BIN**

CTN QTY: 12

CODE: TB30

- Grey gloss finish
- 30 litres capacity
- H.66 x L.39 x W.28cm



**40L SWING LID TIDY BIN**

CTN QTY: 6

CODE: TB40

- Grey gloss finish
- 40 litres capacity
- H.66 x L.39 x W.28cm





**SHARK BIN**

- Heavy-duty plastic bin
- Built from commercial grade materials
- Lids suit both 65 and 90L bases

Description	65L Base	90L Base
Flat Lid	29 x 52 x 69cm	29 x 52 x 81cm
Paper Recycle Lid	29 x 52 x 69cm	29 x 52 x 81cm
Bottle and Can Recycle Lid	29 x 52 x 69cm	29 x 52 x 81cm
Swing Top Lid	29 x 52 x 74cm	29 x 52 x 86cm
Flip Top Lid	30 x 52 x 78cm	230 x 52 x 91cm
Base Only	28 x 51 x 63.5cm	28 x 51 x 75.5cm



**SANITARY BIN**

CTN QTY: 1 CODE: SB

- Slimline design with pedal action
- 20 litres capacity
- 2 tone grey



**SANITARY BIN**

CTN QTY: 1 CODE: SB18

- Slimline design with pedal action
- 18 litres capacity
- L.18.5 x W.35 x H.57cm

White / Teal	SB18
White / Light Blue	SB18LB



**PEDAL BINS**

CTN QTY: 1

- Easy to use foot pedal for hands free operation
- Dispose of waste safely and hygienically
- High quality materials fit for commercial use

30L	PBY30
50L	PBY50
80L	PBY80



**32L SWING TOP BINS**

CTN QTY: 6

- Built in bag/liner clasp
- Made in Australia
- H52 x L32x W36cm

Black	RB32-B
White	RB32-W

**32L COLOUR SWING-TOP BINS**

CTN QTY: 4

- Australian standard colours for waste collection and separation
- Base made from recycled materials
- Built in bag/liner clasp
- Made in Australia
- H52 x L32x W36cm

Blue	RB32C-B
Green	RB32C-G
Red	RB32C-R
Yellow	RB32C-Y

**15L BLACK BIN**

CTN QTY: 12

- Ideal for underneath desks or confined areas
- Black made from recycled materials (GECCA approved)
- Made in Australia
- H29 x L28x W25cm

White	RB15-W
Black	RB15-B
Red	RB15-R
Beige	RB15-Beige
Grey	RB15-G



**15L RECYCLE BINS**

CTN QTY: 12

- Ideal for underneath desks or confined areas
- Black made from recycled materials (GECCA approved)
- Printed on 2 sides
- Made in Australia
- H29 x L28 x W25cm

Black	RB15RE-B
Green	RE15RE-G



**32L RECYCLE BINS**

CTN QTY: 6

- Ideal for underneath desks or confined areas
- Black made from recycled materials (GECCA approved)
- Printed on 2 sides
- Built in bag/liner clasp
- Made in Australia
- H40 x L32 x W36cm

Black	RB32RE-B
Green	RB32RE-G



**STAINLESS STEEL ASHTRAY**

CTN QTY: 1 CODE: ASH30

- 30 litres capacity
- Complete with easy to access rubbish bin
- H.60 x D.25cm



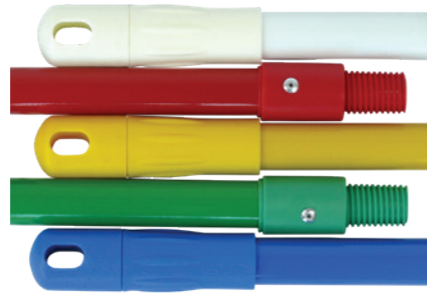


**KITCHEN BROOM**

CTN QTY: 6

- Flagged polyprop bristles to easily trap dust
- 270mm width
- Suits 25mm threaded handles (MHPC or MHAS1.5)

Blue	KB-B
Green	KB-G
Red	KB-R
Yellow	KB-Y



**METAL POWDER-COATED HANDLE**

CTN QTY: 24

- Powder coated to prevent rusting
- Standard universal thread, suits most brooms and mops
- 25mm x 1.4m

Blue	MHPC-B
Green	MHPC-G
Red	MHPC-R
Yellow	MHPC-Y
White	MHPC-W



**PLASTIC PLATFORM BROOM**

- Mix of hard and soft polyprop bristles
- Suits 25mm wooden handle (MHW)

Size	Qty	Code
350mm (14")	12	PPB14
450mm (18")	8	PPB18
600mm (24")	6	PPB24



**TRADIES BROOM**

- Hard wearing bristles that are suitable for most outdoor areas
- Reversible head allows for even wear, double the life of the broom head
- Complete with soft grip handle

Size	Qty	Code
350mm (14")	6	TRBR35
450mm (18")	6	TRBR45
600mm (24")	6	TRBR60



**7 TIE MILLET BROOM**

CTN QTY: 6

CODE: 7TMB

- Quality millet
- 25mm metal handle



**DECK SCRUB**

CTN QTY: 6

CODE: DSC

- Stiff bristles for vigorous scrubbing
- Comes with 1.3m handle 22mm diameter
- 225mm wide brush head

# TRADIES BROOM

(TRBR)

Our Tradies Choice Broom is a hard wearing all-round outdoor broom. It can be used on most outdoor surfaces. It works equally well on rough, uneven, wet or dry surfaces and yet still gentle enough to be used on smooth surfaces without being abrasive.

It comes with a reversible head so you can get the most out of your broom by rotating it to ensure even wear which will extend the life of the broom.

It is made from a heavy-duty hard-wearing plastic and comes with a durable 25mm metal powder coated handle that has soft nonslip safety grip.





## Brushware - General



### SCRUBBING BRUSH

CTN QTY: 12 CODE: BRW9

- Soft grip
- Ergonomic shaped body
- Stiff durable bristles



### HEAVY-DUTY SCRUBBING BRUSH

CTN QTY: 12 CODE: BRW10

- Soft grip handle
- Front scraper edge
- Stiff durable bristles



### BOTTLE AND GLASS BRUSH

CTN QTY: 12 CODE: BTB

- Soft grip handle
- Suits most types of bottles
- Medium/stiff bristles



### LONG-HANDLED GROUT BRUSH

CTN QTY: 20 CODE: LHGB

- Lightweight aluminium handle with stiff durable bristles
- Extends from 65cm to 1.1m



### WATER-FED POLE AND BROOM

CTN QTY: 6 CODE: WFP

- On/off water control valve
- Extends to 1.8m
- 250mm (replacement brush **WFPB**)



### WATER-FED BROOM REPLACEMENT HEAD

CTN QTY: 10 CODE: WFPB

- Makes quick work of window and vehicle washing and has excellent water retention
- For use with Water-fed Pole (**WFP**)
- 250mm head

## Brushware - Toilet



### TOILET BRUSH AND TIDY

CTN QTY: 48 CODE: TBS

- Open free standing base
- Stiff durable bristles for a thorough clean
- Compact and lightweight
- Replacement brush (**TB**)



### TOILET BRUSH ONLY

CTN QTY: 48 CODE: TB

- Stiff durable bristles for a thorough clean
- Hangable



### DELUXE TOILET BRUSH WITH HOLDER

CTN QTY: 12 CODE: BRW2

- Soft grip handle
- Lightweight and easy to use
- Stiff durable bristles for a thorough clean



### DELUXE TOILET TIDY AND RIM BRUSH SET

CTN QTY: 12 CODE: BRW11

- Soft grip handle
- Double headed brush
- Stiff durable bristles for a thorough clean



### TOILET AND RIM BRUSH

CTN QTY: 12 CODE: BRW13

- Soft grip handle
- Stiff and durable bristles for a thorough clean
- Extra brush to clean under rim



### 16L MOP BUCKET

CTN QTY: 2

- Suits left and right handed users
- Heavy-Duty plastic body and castors
- Non-slip pedal and foot base
- 16L capacity

Blue	MBB
Green	MBG
Red	MBR
Yellow	MBY

#### SPARE PARTS

Fixed Roller	MBYR1
Moving Roller	MBYR2
Wheels	MBYW
Spring	MBYS



### WATER-SAVER 12L MINI BUCKET

CTN QTY: 4

- Unique pedal for easy wringing
- Non slip base
- Takes all size mops
- Needs only 3-4 litres of water
- 12L capacity

Blue	MB12B
Red	MB12R
Yellow	MB12Y



### 9.6L ALL-PURPOSE BUCKET

CTN QTY: 12

- Heavy-Duty plastic body
- Plastic handle

Blue	APBB
Green	APBG
Red	APBR
Yellow	APBY



### 9L RECTANGULAR BUCKET

CTN QTY: 30

- Handy pouring spout
- Ergonomical handle

Blue	RAPB-B
Green	RAPB-G
Red	RAPB-R
Yellow	RAPB-Y
Grey	RAPB-GY



### 18L DIVIDED BUCKET

CTN QTY: 5

CODE: DB

- 2 x 9L compartments with water level indicators
- Separates clean and dirty water
- Extra wide pouring spout



### CLEANER'S BASKET

CTN QTY: 20

CODE: CBW

- Ideal for carrying cleaning accessories
- Sturdy and lightweight



### 11L WINDOW CLEANING BUCKET

CTN QTY: 20

CODE: WCB-B

- Ergonomic handle
- Lightweight
- Suits 14" squeegees and washers
- H.19 x L.42 x W.23cm



### 22L BUCKET ON WHEELS

CTN QTY: 5

CODE: BOW

- Heavy-duty castors
- Ergonomic handle
- Washer scrubbing grid included





**CAUTION WET FLOOR/ CLEANING IN PROGRESS ' CAUTION CONE**

CTN QTY: 5

- Sturdy Plastic Construction
- Clip on header included

1170mm	CSC1170WC
950mm	CSC950WC



**DOOR-HANGING CAUTION SIGN**

CTN QTY: 6

CODE: CSDH

- 'Closed for Cleaning'
- Suits openings from 75cm to 135cm
- Soft non marking pads

**A-FRAME CAUTION SIGN**

CTN QTY: 6

- Lightweight and compact
- Height of 60cm with a convenient carry handle
- Double sided with clear distinct messages



CSIGNWF



CSIGNWC



CSIGNCIP



CSIGNWYS



CSIGNOWA



CSIGNWP



CSIGNWC-G



CSIGNWC-P



CSIGNB



**ASSORTED PACK OF MICROFIBRE CLOTHS**

CTN QTY: 16

CODE: MFR

- Various textures, sizes and colours
- Between 12-15 cloths per bag
- Resealable bag
- 400g bags



**MICROFIBRE CLOTH AND SCOURER**

CTN QTY: 24

CODE: MICROKITCHEN

- Non-scratch scourer scrubs pots, sinks, ovens and more
- Thick absorbent cloth clears away dirt, dust and grime
- 23 x 17cm
- 5 cloths per pack



**OIL IMPREGNATED CLOTH**

CTN QTY: 5

CODE: NAB-DW

- Easily attracts and traps dust
- Anti-static
- 60x30cm cloths
- 25 cloths per pack



**EXTRA HEAVY-DUTY CLEANING CLOTHS**

CTN QTY: 4

- High absorbency
- Washable and reusable
- 40 x 38cm cloths
- 25 cloths per pack

Blue	GB-B
Green	GB-G
Red	GB-R
Yellow	GB-Y



**ISOPROPYL ALCOHOL WIPES**

CTN QTY: 12

CODE: IAW

- Thick, strong cloths
- 75 Wipes (14x42cm)
- 70% Isopropyl Alcohol



**MIXED COTTON RAGS**

CTN QTY: 1

- Highly absorbent material
- Laundered and cut pieces of cotton
- Compressed bag makes handling and storage easy

1KG	BOR1KG
5KG	BOR5KG
10KG	BOR10KG





## BAMBOO BIOWIPE

CTN QTY: 6

- Made from 100% Bamboo fibres
- No plastic material or packaging used
- 45m roll with 90 perforated sheets
- Thick, absorbent and strong

Blue	BWB
Green	BWG
Red	BWR
Yellow	BWY
Coffee	BWC



## EXTRA HEAVY-DUTY WIPES ROLL

CTN QTY: 6

- Premium reusable wipes
- Antibacterial to prevent contamination
- 30cm x 45m roll in 50cm perforated sheets
- 90 sheets per roll
- Use with our Wipes Roll Dispenser (HDWD)
- Thick, absorbent and strong

Blue	HDWB
Green	HDWG
Red	HDWR
Yellow	HDWY
Coffee	HDWC



## HEAVY-DUTY WIPES

CTN QTY: 6

- General purpose reusable cleaning wipes
- 30cm x 45m roll in 50cm perforated sheets
- 90 sheets per roll
- Use with our Wipes Roll Dispenser (HDWD)

Blue	EWB
Green	EWG
Red	EWR
Yellow	EWY
Coffee	EWK
Purple	EWV



## HEAVY-DUTY CLEANING CLOTHS

CTN QTY: 5

- Antibacterial
- Washable and reusable
- 60 x 60cm pre-cut sheets
- 20 sheets per pack

Blue	HDCB20B
Green	HDCB20G
Red	HDCB20R
Yellow	HDCB20Y



## ALL PURPOSE CLOTHS

CTN QTY: 10

- Washable and reusable
- Antibacterial
- 20 Sheets per pack
- 45 x 60 cm pre-cut sheets

Blue	APCWB
Green	APCWG
Red	APCWR
Yellow	APCWY



## BULK CUT WIPES

CTN QTY: 4

- Washable and reusable
- 60 x 60cm pre-cut wipes
- 100 sheets per carton
- Antibacterial

Blue	BCW60B
Green	BCW60G
Red	BCW60R
Yellow	BCW60Y

# BIODEGRADABLE ECO FRIENDLY BAMBOO BIOWIPES

Every cloth used and disposed of introduces more plastic into our environment. Its for this reason we at NAB Clean have developed the BIOWIPE to offer a more environmentally friendly option.

Wipe cloths are commonly manufactured using different combinations of materials, nearly always including Polyester as a cheap way to reduces costs. WE know that sometimes its not all about the money.

Our Cloth is made using natural Biodegradable Bamboo fibres and No plastic, even our label is plastic free

Its Thick, absorbent and strong,  
this is the best wipe we've produced yet.







## MICROGLASS

CTN QTY: 200

- Diamond weave powers through dirt and residue
- Effective in cleaning surfaces in a streak free and lint free manner
- Ideal for windows, glass and mirrors
- Washable and reusable
- 40 x 40 cm
- 10 cloths per pack



## MICROFIBRE CLEANING CLOTHS

CTN QTY: 200

- Use with or without chemicals
- 40 x 40 cm
- Traps and removes dirt particles
- Washable and reusable
- 10 cloths per pack

Blue	MCB
Green	MCG
Red	MCR
Yellow	MCY
White	MCW
Pink	MCP



## MICROFIBRE CLOTHS

CTN QTY: 50

- Use with or without chemicals
- 36 x 36cm
- Traps and removes dirt particles
- Washable and reusable
- Counter display box

Blue	SMCB
Green	SMCG
Red	SMCR
Yellow	SMCY



## JET BLACK MICROFIBRE CLOTH

CTN QTY: 200

CODE: MCBLACK

- Colour safe in bleach and hot water
- Thick and highly absorbent
- Plush weave to clean most surfaces
- 10 cloths per pack, 200 cloths per carton



## PREMIUM MICROFIBRE CLEANING CLOTHS

CTN QTY: 150

- Use with or without chemicals
- 40 x 40 cm
- Traps and removes dirt particles
- Washable and reusable
- Individually packed

Blue	MICROB
Green	MICROG
Red	MICROR
Yellow	MICROY



## BARISTA CLOTH

CTN QTY: 100

CODE: MICROC

- Use with or without chemicals
- High quality microfibre cloth, perfect for any cafe, bar or restaurant
- The cloth size (60 x 30cm) makes cleaning portafilters, steam wands and wiping down benches easy work



# BLACK MICROFIBRE CLOTH

(MCBLACK)

Our black microfibre cloth is thick and highly absorbent with a plush weave to clean most surfaces. Its colour safe in bleach and hot water making it ideal for reuse.



# BARISTA CLOTH

(MICROC)

Our Barista cloth was developed with hospitality in mind. Perfect for any bar, café, restaurant or local coffee shop, its extra-long size 60x30cm makes it ideal to clean portafilters, steam wands and wiping down benches. The barista cloth is extra thick allowing direct contact with the steam wand. This high-quality low lint microfibre can be incorporated into your regular cleaning with or without chemicals.





## Paper Dispensers



### ADJUSTABLE ULTRASLIM INTERLEAF PAPER DISPENSER

CTN QTY: 12 CODE: IPTDP

- Adjustable inserts to suit four paper sizes
- Heavy-Duty ABS plastic
- Lockable
- Clear window to monitor paper levels
- L.25 x W.7 x H.36cm



### INTERLEAF PAPER TOWEL DISPENSER - METAL

CTN QTY: 6 CODE: IPTD

- White powder coated metal
- Lockable
- Suitable for ultraslim interleaf paper
- L.27 x W.7.5 x H.36cm



### INTERLEAF PAPER TOWEL DISPENSER - STAINLESS STEEL

CTN QTY: 6 CODE: IPTD/SS

- Heavy-Duty stainless steel with matt finish
- Lockable
- Suitable for ultraslim interleaf paper
- L.27 x W.7.5 x H.36cm

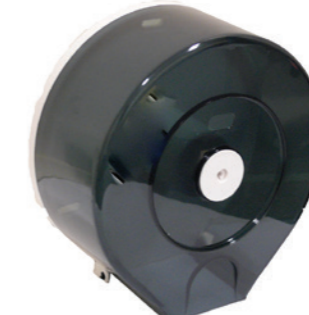
## Paper Dispensers



### MINI INTERLEAF PAPER TOWEL DISPENSER

CTN QTY: 12 CODE: MPTD

- Heavy-duty plastic build
- Push button access - no key required
- Suitable for slimline interleaf paper
- L.25.2 x W.10.6 x H.16.8cm



### JUMBO TOILET ROLL DISPENSER

CTN QTY: 12 CODE: JRDB

- Heavy-Duty ABS plastic construct
- Dark blue transparent front
- Lockable
- Suitable for standard jumbo rolls
- L.27 x W.12 x H.28cm



### WHITE JUMBO TOILET ROLL DISPENSER

CTN QTY: 6 CODE: JRDW

- Heavy-duty ABS plastic construct
- Brilliant white
- Lockable
- Suitable for standard jumbo rolls
- L. 25.8 x W.12.8 x H.27.9cm



### INTERLEAF PAPER TOWEL DISPENSER

CTN QTY: 6 CODE: PTDW

- Heavy-duty plastic build
- Lockable
- Brilliant white
- Suitable for slimline interleaf paper
- L.27.5 x W.11.8 x H.37.2cm



### INTERLEAF METAL PAPER TOWEL DISPENSER - METAL

CTN QTY: 8 CODE: PHTD

- Heavy-Duty cold-rolled powder coated metal
- Lockable
- Suitable for slimline interleaf paper
- L.28 x W.10.5 x H.37cm



### INTERLEAF PAPER TOWEL DISPENSER - STAINLESS STEEL

CTN QTY: 8 CODE: SPHTD

- Heavy-Duty stainless steel with matt finish
- Lockable
- Suitable for slimline interleaf paper
- H.37x L.28x W.10cm



### JUMBO ROLL DISPENSER - METAL

CTN QTY: 6 CODE: JTRD

- White powder-coated metal
- Lockable
- Suitable for standard jumbo rolls



### JUMBO ROLL DISPENSER - STAINLESS STEEL

CTN QTY: 6 CODE: SJTRD

- Heavy-Duty matt stainless steel
- Lockable
- Suitable for standard jumbo rolls
- L.27.3 x W.12 x H.27.3cm



### PREMIUM JUMBO DISPENSER - STAINLESS STEEL

CTN QTY: 6 CODE: P-SJTRD

- Heavy-Duty matt stainless steel
- Strengthened for extra durability
- Top of the range jumbo dispenser
- Lockable
- Large diameter to fit most jumbo rolls
- L.30.5 x W.11.8 x H.31.3cm

# Paper Dispensers



## TWIN JUMBO TOILET ROLL DISPENSER

CTN QTY: 6 CODE: TJTRD

- Heavy-Duty ABS plastic construct
- Dark blue transparent front
- Lockable
- Suitable for standard jumbo rolls
- L.50.5 x W.12.5 x H.28.5cm



## TWIN JUMBO TOILET ROLL DISPENSER - STAINLESS STEEL

CTN QTY: 4 CODE: TJTRD/SS

- Heavy-Duty stainless steel
- Strengthened for extra durability
- Lockable
- Suitable for standard jumbo rolls
- L.47.7 x W.13 x H.26.2cm



## TWIN JUMBO TOILET ROLL DISPENSER

CTN QTY: 8 CODE: TJTRW

- Heavy-Duty ABS plastic construct
- Brilliant White
- Lockable
- Suitable for standard jumbo rolls
- L.50.6 x W.12.3 x H.30.5cm

# Paper Dispensers



## PLASTIC HAND TOWEL ROLL DISPENSER

CTN QTY: 6 CODE: ROLLP

- White heavy-duty ABS plastic build
- Lockable
- Replacement Insert (HTRDI)
- L.22.5 x W.18.5 x H.21cm



## EASY ACCESS HAND TOWEL ROLL DISPENSER

CTN QTY: 6 CODE: HTRDNL

- Push button access
- Powder-coated metal
- No key required
- Replacement Insert (HTRDI)
- L.22.5 x W.18.5 x H.21cm



## METAL HAND TOWEL ROLL DISPENSER

CTN QTY: 6 CODE: HTRD

- White powder-coated metal
- Lockable
- Replacement Insert (HTRDI)
- L.22.5 x W.18.5 x H.21cm



## TRIPLE TOILET ROLL DISPENSER - STAINLESS STEEL

CTN QTY: 12 CODE: TTRD/SS

- Heavy-Duty stainless steel with matt finish
- Lockable
- Suitable for standard toilet rolls
- 3 roll capacity
- L.12.5 x W.12.5 x H.42.5cm



## TRIPLE TOILET ROLL DISPENSER - METAL

CTN QTY: 12 CODE: TTRD

- White powder-coated metal
- Lockable
- Suitable for standard toilet rolls
- 3 roll capacity
- L.12.5 x W.12.5 x H.42.5cm



## DOUBLE TOILET ROLL DISPENSER - STAINLESS STEEL

CTN QTY: 15 CODE: DTRDS

- Heavy-Duty stainless steel
- Suitable for standard toilet rolls
- Lockable
- 2 roll capacity
- L.12.5 x W.12.5 x H.29.5cm



## HAND TOWEL ROLL DISPENSER - STAINLESS STEEL

CTN QTY: 6 CODE: HTRD/SS

- Heavy-Duty stainless steel
- Lockable
- Replacement Insert (HTRDI)
- L.22.5 x W.18.5 x H.21cm



## CENTER PULL DISPENSER BLUE

CTN QTY: 6 CODE: CPDB

- Heavy-duty ABS plastic build
- Lockable
- Suitable for center pull rolls
- Light blue transparent colour
- L.25 x W.27 x H.31.5cm



## CENTRE PULL PAPER TOWEL DISPENSER

CTN QTY: 6 CODE: CPD

- Heavy-Duty build
- Lockable
- Suitable for centre pull rolls
- Dark transparent cover



# Soap Dispensers



## AUTOMATIC SOAP/SANITISER DISPENSER

- CTN QTY: 16      CODE: ADS
- Heavy-duty ABS plastic
  - Capacity: 1200ml
  - Use AA batteries (batteries not included)
  - L.12.5 x D.13.2 x H.26cm



## STAINLESS STEEL HORIZONTAL SOAP DISPENSER

- CTN QTY: 20      CODE: SDH12
- High quality stainless steel with satin finish
  - Lockable
  - Refillable
  - H.12 x L.20 x W .7cm
  - 1200ml capacity

Parts	
Pump	SDVV
Eye	SDVE



## STAINLESS STEEL VERTICAL SOAP DISPENSER

- CTN QTY: 20      CODE: SDV12
- High quality stainless steel with satin finish
  - Lockable
  - Refillable
  - H.20x L.12x W.7cm
  - 1200ml capacity

Parts	
Pump	SDVV
Eye	SDVE



## 800ML PLASTIC SOAP DISPENSER

- CTN QTY: 30      CODE: SD24
- Heavy-Duty plastic construction
  - Refillable
  - Blue transparent body
  - H.21.5 x L.9x W.9cm
  - 800ml capacity



## 600ML PLASTIC SOAP DISPENSER

- CTN QTY: 40      CODE: SSD23
- Refillable
  - Amber transparent body
  - H.23x L.8x W.9cm
  - 600ml capacity



Ideal for use in child care, food service and hospitality.  
Highly effective and safe to use on sensitive skin.  
Made to suit Australian conditions, quality and safety requirements.



## FOAM HAND WASH 1L

CODE: NAB-9700

- Kills 99.9% of germs
- Colour & Perfume free
- Enriched with moisturisers

## FOAM HAND & BODY WASH 1L

CODE: NAB-9710

- Kills 99.9% of germs
- Light floral fragrance
- Enriched with moisturisers

## ANTIBACTERIAL HAND WASH 1L

CODE: NAB-9720

- Kills 99.9% of germs
- Colour & Perfume free
- Enriched with moisturisers

## FOAM HAND SANITISER 1L

CODE: NAB-9730

- Kills 99.9% of germs
- Colour & Perfume free
- Enriched with moisturisers

## MOISTURISING LOTION 1L

CODE: NAB-9740

- Nourish & rejuvenate skin
- Colour & Perfume free
- Non-greasy, lightweight formula



**WOOL DUSTER**

CTN QTY: 100 CODE: WD

- Premium woollen fibres
- Ideal for delicate and general dusting
- 70cm long



**WOOL DUSTER WITH EXTENDABLE HANDLE**

CTN QTY: 20 CODE: WDE

- Premium woollen fibres
- Ideal for delicate and general dusting
- Extends to 150cm



**PIPE DUSTER**

CTN QTY: 20 CODE: PD

- Durable bristles
- Lightweight
- Bendable for hard to get to areas
- Suits most extension poles



**LIGHTWEIGHT SWIVEL BRUSH**

CTN QTY: 1 CODE: SWB14E

- Soft bristles that are arranged to maximise contact area
- Can be hand held or pole mounted
- Ideal for cobweb removal and general dusting



**DOME COBWEB BRUSH**

CTN QTY: 1 CODE: RDHBDR

- Soft durable bristles
- Makes easy work of hard to reach spots
- Can be hand held or pole mounted
- Ideal for cobweb and dust removal



**50CM FEATHER DUSTERS**

CTN QTY: 6 CODE: FD50

- Genuine ostrich feathers
- 50cm long
- Lightweight
- Ideal for dusting delicate objects
- Ostrich feathers don't discharge static so are great for dusting electronic equipment



**CEILING DUSTER**

CTN QTY: 10 CODE: CD

- Durable bristles
- Lightweight
- Large triangular shaped head for larger areas
- Suits most extension poles



**CEILING DUSTER WITH TELESCOPIC HANDLE**

CTN QTY: 6 CODE: CDH1

- Synthetic bristles
- Large oval shaped head for larger areas
- Extendable handle to 1.6m



**DOMED CEILING DUSTER WITH TELESCOPIC HANDLE**

CTN QTY: 12 CODE: CDR1

- Synthetic bristles
- Domed head for hard to get to areas
- Extendable handle to 1.6m



**80CM FEATHER DUSTERS**

CTN QTY: 6 CODE: FD80

- Genuine ostrich feathers
- 80cm long
- Lightweight
- Ideal for dusting delicate objects
- Ostrich feathers don't discharge static so are great for dusting electronic equipment



**EXTENDABLE FEATHER DUSTERS**

CTN QTY: 6 CODE: FD140E

- Genuine ostrich feathers
- Extends to 140cm
- Lightweight
- Ideal for dusting delicate objects
- Ostrich feathers don't discharge static so are great for dusting electronic equipment

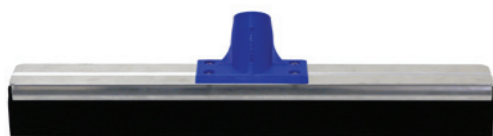


# Floor Squeegees



## NEOPRENE FLOOR SQUEEGEE - HEAD ONLY

CTN QTY: 12



- Flexible neoprene double blade on rust resistant aluminium frame
- Suits standard 25mm handle (MHPC or MHAS1.5)
- Replacement blade available RH-AB18 or RH-AB24

	45cm (18")	60cm (24")
Blue	AB18B	AB24B
Green	AB18G	AB24G
Red	AB18R	AB24R
Yellow	AB18Y	AB24Y

## RUBBER FLOOR SQUEEGEE - HEAD ONLY

CTN QTY: 12

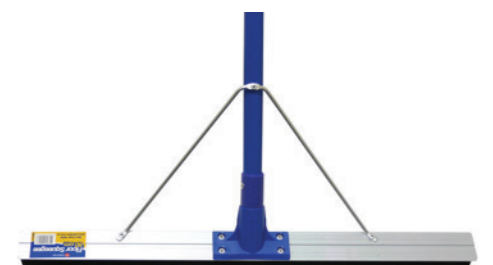


- Heavy duty grease resistant rubber on rust resistant aluminium frame
- Suits standard 25mm handle (MHPC or MHAS1.5)

	45cm (18")	60cm (24")
Blue	RAB18B	RAB24B
Green	RAB18G	RAB24G
Red	RAB18R	RAB24R
Yellow	RAB18Y	RAB24Y

## REINFORCED NEOPRENE FLOOR SQUEEGEE

CTN QTY: 6



- Complete with 1.35M powder coated handle and strong steel galvanised supporting brace
- Flexible neoprene double blade on rust resistant aluminium frame
- This aluminium floor squeegee will take on the toughest jobs.
- Replacement blade available RH-AB18 or RH-AB24

	45cm (18")	60cm (24")
Blue	AB18B-H	AB24B-H
Green	AB18G-H	AB24G-H
Red	AB18R-H	AB24R-H
Yellow	AB18Y-H	AB24Y-H

## REINFORCED RUBBER FLOOR SQUEEGEE

CTN QTY: 6



- Complete with 1.35M powder coated handle and strong steel galvanised supporting brace
- Heavy duty grease resistant rubber on rust resistant aluminium frame

	45cm (18")	60cm (24")
Blue	RAB18B-H	RAB24B-H
Green	RAB18G-H	RAB24G-H
Red	RAB18R-H	RAB24R-H
Yellow	RAB18Y-H	RAB24Y-H

# Demon Floor Pads



## WHITE POLISHING FLOOR PADS

CTN QTY: 5

- Extra fine non abrasive floor pad
- Ideal for dry polishing for an ultra shiny finish
- Can be used with a mist spray for a mirror like finish

30cm (12")	FP30-W
33cm (13")	FP33-W
35cm (14")	FP35-W
40cm (16")	FP40-W
43cm (17")	FP43-W
45cm (18")	FP45-W
50cm (20")	FP50-W



## RED BUFFING FLOOR PADS

CTN QTY: 5

- Fine/Medium abrasive floor pad
- Ideal for spot buffing
- Can also be used wet for very light scrubbing

30cm (12")	FP30-R
33cm (13")	FP33-R
35cm (14")	FP35-R
40cm (16")	FP40-R
43cm (17")	FP43-R
45cm (18")	FP45-R
50cm (20")	FP50-R



## BLUE SCRUBBING FLOOR PADS

CTN QTY: 5

- Medium abrasive floor pad
- Ideal for cleaning or light scrubbing
- Can also be used for light stripping

30cm (12")	FP30-B
33cm (13")	FP33-B
35cm (14")	FP35-B
40cm (16")	FP40-B
43cm (17")	FP43-B
45cm (18")	FP45-B
50cm (20")	FP50-B



## BROWN STRIPPING FLOOR PADS

CTN QTY: 5

CODE: FP-40BR

- Very abrasive floor pad
- Ideal for wet and dry stripping
- Removes dirt and build up grime
- Only comes in 40cm (16")



## BLACK STRIPPING FLOOR PADS

CTN QTY: 5

- Highly abrasive floor pad
- Very aggressive
- Ideal for wet and dry stripping

30cm (12")	FP30-BL
33cm (13")	FP33-BL
35cm (14")	FP35-BL
40cm (16")	FP40-BL
43cm (17")	FP43-BL
45cm (18")	FP45-BL
50cm (20")	FP50-BL



## DEMON PADS

CTN QTY: 80

- Use with our plastic floor tool (PFT)
- 252mm x 110mm
- 10 pads per pack

White	Polishing	PFTP-W
Blue	Stripping	PFTP-B
Green	Stripping	PFTP-G
Red	Scrubbing	PFTP-R
Brown	Buffing	PFTP-BR
Black	Stripping	PFTP-BL





### PLASTIC FLOOR TOOL

CTN QTY: 50 CODE: PFT

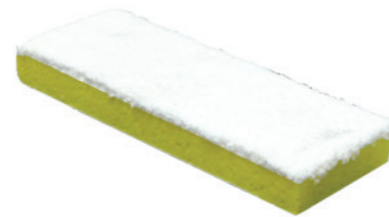
- Heavy-Duty construction with swivel head for easy manoeuvrability
- For use with 22mm or 25mm handles (MHW1)
- 230mm x 95mm



### DEMON PAD FLOOR TOOL SET

CTN QTY: 18 CODE: PFTPSET

- Heavy-duty floor tool
- Comes complete with 3 floor tool pads
- 252mm x 110mm



### MICROFIBER PAD

CTN QTY: 10 CODE: MBMR

- Soft microfiber that gives a great finish
- Use with PFT



### ALUMINIUM HANDLES 1.5M

CTN QTY: 24

- Lightweight and ideal for commercial use
- Standard universal thread suits most brooms and mops
- 25mm x 1.5 m

Blue	MHAS-B
Green	MHAS-G
Red	MHAS-R
Yellow	MHAS-Y
White	MHAS-W



### METAL POWDER-COATED HANDLE 1.4M

CTN QTY: 24

- Powder coated to prevent rusting
- Standard universal thread, suits most brooms and mops
- 25mm x 1.4m

Blue	MHPC-B
Green	MHPC-G
Red	MHPC-R
Yellow	MHPC-Y
White	MHPC-W



### METAL POWDER-COATED HANDLE 1.3M

CTN QTY: 24 CODE: MHPC1.35-B

- Powder coated to prevent rusting
- Standard universal thread, suits most brooms and mops
- 25mm x 1.3m
- Blue Colour



### WOODEN HANDLE

CTN QTY: 25

- Ideal for heavy-duty use

22mm x 1.35M	MHW1
25mm x 1.5M	MHW
25mm x 1.8M	MHW1.8



### MULTI-PURPOSE HOLDER

CTN QTY: 24 CODE: MPH

- Ideal for all storage needs
- Easy wall mounting
- Holds up to 11 items



## Lobby and Dust Pans



### UPRIGHT LOBBY DUST PAN WITH BROOM

CTN QTY: 6

- Industrial strength
- Quality brush with aluminium handle
- Deep pan for large cleaning jobs
- Replacement broom available (LDPUB)

Blue	LDPU1B
Green	LDPU1G
Red	LDPU1R
Yellow	LDPU1Y
Black	LDPU1



### METAL UPRIGHT LOBBY DUST PAN

CTN QTY: 6

CODE: MLDP

- Industrial strength metal pan
- Ergonomic handle
- Folding pan with lid to minimize spillage
- Use together with the replacement lobby broom (LDPUB)



### METAL DUSTPAN

CTN QTY: 12

CODE: MDP1

- Durable steel design
- Ergonomic handle
- Powdercoated



### PLASTIC DUST PAN SET

CTN QTY: 24

- General purpose
- Soft rubber lip for better dirt collection
- Assorted colours

Blue	PDPB
Green	PDPG
Red	PDPR
Yellow	PDPY



### PREMIUM DUST PAN SET

CTN QTY: 12

- Soft grip handle
- Convenient plastic scraping edge
- Curved base to better hold debris
- No corners in the pan makes emptying it out a breeze

Blue	BRW14B
Green	BRW14G



### DELUXE DUST PAN WITH BRUSH

CTN QTY: 12

CODE: BRW1

- Flagged bristles to maximize collection
- Soft grip handle on brush
- Plastic lip on pan for better dirt collection

## Mops



### CONTRACTOR MOP

CTN QTY: 12

- Highly absorbent 100% cotton with a standard universal fitting
- Industrial strength
- Use with MHPC or MHAS

350g	CMHB20
450g	CMHB24
550g	CMHB28
600g	CMHB30



### 400G COLOURED COTTON MOP

CTN QTY: 12

- Highly absorbent 100% cotton with standard universal fitting
- Industrial Strength
- Use with MHPC or MHAS

Blue	CMMB
Green	CMMG
Red	CMMR
Yellow	CMMY



### 400G LOOP MOP WITH PLASTIC SOCKET

CTN QTY: 12

- Highly absorbent with looped ends to prevent linting
- Washable
- Use with MHPC or MHAS

Blue	AL488B
Green	AL488G
Red	AL488R
Yellow	AL488Y



### 400G PREMIUM DURA TUFF MOP

CTN QTY: 12

- Absorbent yarn with standard universal fitting
- Industrial strength
- Use with MHPC or MHAS

Blue	DMCB1
Green	DMCG
Red	DMCR
Yellow	DMCY



### MICROFIBRE LOOP MOP

CTN QTY: 12

- Latest microfibre technology
- Use with or without chemicals
- Captures grease, dirt and dust without streaking
- Use with MHPC or MHAS

Blue	MMB
Green	MMG
Red	MMR
Yellow	MMY



### POLISH APPLICATOR 24" WHITE

CTN QTY: 50

CODE: PA

- Looped nylon fringe
- Sponged backing allows polish to spread evenly
- Suits most 61cm frames



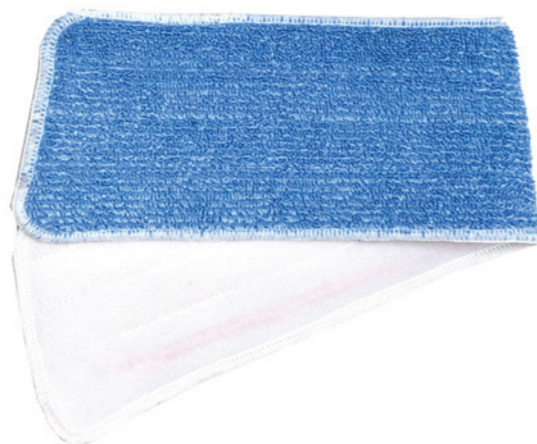


**FLAT MOP SYSTEM**

- High-quality build and lightweight materials that will take on any job
- Lockable swivel head to give better control.
- Thin head height to give you better access to hard to reach places.
- Replaceable velcro strips and clips
- Twist locking extendable soft grip handle (1.4m) for easier storage and user customisation
- Comes with one replacement pad



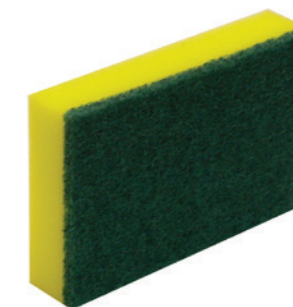
Complete 40cm Set (Head, handle and one Blue refill)	<b>FM40S</b>
Complete 60cm Set (Head, handle and one Blue refill)	<b>FM60S</b>
Complete 90cm Set (Head, handle and one Blue refill)	<b>FM90S</b>
40cm head with Blue refill	<b>FM40</b>
60cm head with Blue refill	<b>FM60</b>
90cm head with Blue refill	<b>FM90</b>
<hr/>	
Handle	<b>FMH</b>
40cm Refill Blue	<b>FM40R</b>
60cm Refill Blue	<b>FM60R</b>
90cm Refill Blue	<b>FM90R</b>
40cm Refill Red	<b>FM40RR</b>
60cm Refill Red	<b>FM60RR</b>



**COMMERCIAL GREEN SCOURER**

- Commercial grade scourer
- Ideal for cleaning pots and metal surfaces
- 10 per pack

SIZE	CTN QTY	CODE
23 x 15 cm	200	<b>CGS</b>
15 x 10 cm	400	<b>HCGS</b>
7.5 x 10 cm	500	<b>SCGS</b>



**GREEN AND YELLOW SPONGE SCOURER**

- Commercial grade scourer that removes tough built up grime
- Ideal for cleaning pots and metal surfaces
- 10 per pack

SIZE	CTN QTY	CODE
15 x 10 cm	180	<b>NBSS</b>
7.5 x 10 cm	200	<b>HNBSS</b>



**WHITE AND YELLOW SOFT SPONGE SCOURER**

- Commercial grade scourer
- Ideal for non aggressive cleaning
- 15x10cm
- 10 per pack

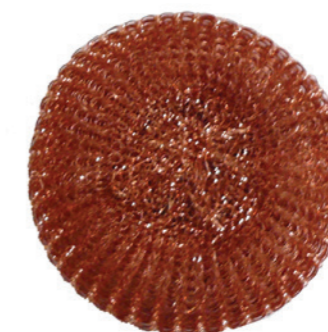
CTN QTY: 180 CODE: NBSSW



**ANTIBACTERIAL SPONGE SCOURER**

- The antibacterial elements present in the sponge help fight the spread of germs and odours
- Commercial grade scourer that removes tough built up grime
- Ideal for cleaning pots and metal surfaces
- 5 per pack

CTN QTY: 270 CODE: NBSSA



**70G COPPER SCOURER**

- Commercial quality copper plated scourer
- 12 per pack

CTN QTY: 120 CODE: NBC70



**STAINLESS STEEL SCOURER**

- Premium stainless steel
- Continuous open weave for easier cleaning
- Rust resistant
- 12 per pack

CTN QTY: 120	CODE
50g Scourer	<b>SSS50</b>
70g Scourer	<b>SSS70</b>





### MICRO SPONGE

CTN QTY: 24

- Cleans easily without chemicals
- Suitable for a wide range of surfaces

18 x 9 x 4cm	MSL
11 x 7 x 4	MSS

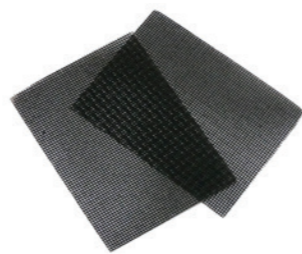


### POT AND PAN SCOURER

CTN QTY: 120

CODE: PNP

- Scour away the most stubborn deposits
- Ideal replacement for stainless steel wool and metal scourers
- Open weave construction for easy cleaning
- Extra heavy duty
- 125 x 90mm
- 10 per pack

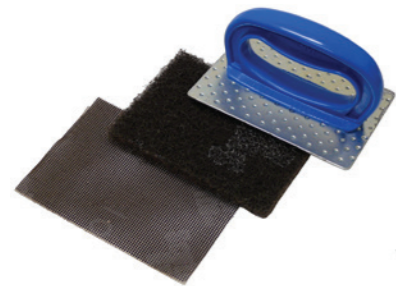


### GRIDDLE SCREENS

CTN QTY: 200

CODE: GS200

- Ideal for heavy duty cleaning and removal of grease and food build-up
- Use for flat top griddles
- 10 x 14cm
- 20 per pack



### 3M GRIDDLE CLEANING SYSTEM

CTN QTY: 1

CODE: 461-3M

- Three part system consisting of holder, pad and screen
- Scrape debris with scraper, clean griddle with screen and polish with pad
- Effectively removed carbonised grease and food debris, and polishes the surface to make food stick less in the future.



# POT N PAN SCOURER

(PNP)

An extremely hard-wearing scourer, which will tackle the most stubborn deposits with its open weave construction making cleaning with this scourer easy. Its made from 100% synthetic fibres so it contains no metal.

It's an ideal replacement for stainless steel and other metal scourers.







### NAB TRIGGER

CTN QTY: 350

- Chemical resistant
- Adjustable nozzle
- Use with 500ml or 1 litre bottles
- 50 triggers per pack

	225mm	205mm
Blue	T/DB	T/DB205
Green	T/DG	T/DG205
Red	T/DR	
Yellow	T/DY	
White	T/DW	
Black	T/DBK	

### BRUTAL TRIGGER

CTN QTY: 350

CODE: T/BRUT

- Our new Brutal Trigger offers superior chemical resistance with outstanding functionality
- Rigorously tested and manufactured from the highest quality materials
- Adjustable nozzle
- Next level longevity when standard chemical resistance won't do
- 50 triggers per pack

### 500ML SPRAY BOTTLE

CTN QTY: 144

CODE: BOT500SAUS

- Australian Made
- Use with our Spray Triggers
- Neck Size is 28mm
- HDPE



### 500ML BOTTLE AND PUMP

CTN QTY: 90

CODE: BOTPUMP

- 500ml clear Bottle
- PET Plastic Bottle
- White Pump

### 500ML BOTTLE AND PUMP

CTN QTY: 160

- Bottle is Australian Made
- 500ml Dutch Oval Bottles
- PET Plastic
- Bottle Carton Quantity: 160

Bottle	BOT500Clear
Pump	P28/410



### 500ML PLASTIC SPRAY BOTTLE - TAPERED

CTN QTY: 64

- Chemical resistant with adjustable nozzle
- Measurements moulded into bottle
- Assorted colours

Blue	NB70B
Green	NB70G
Red	NB70R
Yellow	NB70Y

### 500ML PLASTIC SPRAY BOTTLE - STRAIGHT

CTN QTY: 68

- Chemical resistant with adjustable nozzle
- Assorted colours

Blue	NB70SB
Green	NB70SG
Red	NB70SR
Yellow	NB70SY

### 1L PLASTIC SPRAY BOTTLE

CTN QTY: 36

- Chemical resistant with adjustable nozzle
- Measurements moulded into bottle
- Assorted colours

Blue	NB71B
Green	NB71G
Red	NB71R
Yellow	NB71Y



### CANYON TRIGGER

- CTN QTY: 350
- High quality industrial sprayer
  - Adjustable nozzle
  - Resistant to most solvents and chemicals

	225mm	205mm	185mm
Blue	CT225B	CT205B	CT185B
Green	CT225G	CT205G	CT185G
Red	CT225R		CT185R
Yellow	CT225Y		CT185Y
White	CT225W		CT185W



### CANYON SUPER TRIGGER 225MM

- CTN QTY: 350 CODE: CST-225
- High quality industrial sprayer
  - Adjustable nozzle
  - Resistant to most solvents and harsher chemicals



### CANYON FOAM TRIGGER

- CTN QTY: 350 CODE: CT225FOAM
- High quality industrial sprayer
  - Adjustable nozzle
  - Resistant to most solvents and chemicals
  - Foaming nozzle system



### STANDARD PUMP SUITABLE FOR 5L DRUMS

- CTN QTY: 250 CODE: P32
- Chemical resistant
  - Twist locking
  - 30ml output per pump



### PRESSURE SPRAY BOTTLE

- Adjustable nozzle
- Measurements moulded

SIZE	CTN QTY	
1.1L	24	PSPRAY1
2L	15	PSPRAY2



### UTILITY TROLLEY

- CTN QTY: 1 CODE: UT
- Comfortable ergonomic handle
  - Multiple uses
  - Heavy-Duty castors
  - L.60 x W.41 x H.95cm

Grey	UT
Black	UTB

SPARE PARTS	
Cutlery Bin	CUTBIN
Waste Bucket	WB
Wheels	FSTW



### FOOD SERVICE TROLLEY

- CTN QTY: 1
- Sturdy construction
  - Multiple uses
  - Heavy-Duty castors
  - L.88 x W.50 x H.97cm

Grey	FST
Black	FST Black

SPARE PARTS	
Cutlery Bin	CUTBIN
Waste Bucket	WB
Wheels	FSTW



### ALL-PURPOSE JANITOR CART

- CTN QTY: 1 CODE: JC
- Tough sturdy construction
  - Complete with laundry/refuse bag
  - Swivel front wheels for easy manoeuvrability

SPARE PARTS	
Locking Cabinet	JLCL
Front Wheel	JCFW
Rear Wheel	JCRW
Extra Bag	JCB



### ROOM SERVICE TROLLEY

- CTN QTY: 1 CODE: RST
- Tough sturdy construction
  - Wheels with brakes to prevent rolling
  - Adjustable shelf
  - Replacement bag RSTB
  - L.143 x W.54 x H.95cm



### X RUBBISH TROLLEY

- CTN QTY: 1 CODE: XRT
- Large bag for linen collection
  - Heavy-Duty plastic with easy to fold frame

SPARE PARTS	
Bag	XRTB
Wheel	XRTW



### WASTE TROLLEY

- CTN QTY: 1
- Heavy-Duty steel frame powder coated to prevent rusting
  - Bag included
  - L.88 x W.58 x H.94cm

SPARE PARTS	
Bag	WTB
Wheel	WTW
FRAME ONLY with castors	WT





**3 SPEED CARPET DRYER**

CTN QTY: 1 CODE: DRYER

- Heavy-Duty build
- 900 watt and 75 hp motor
- 3 speeds

**PORTABLE 3 SPEED CARPET DRYER**

CTN QTY: 1 CODE: DRYER PORT

- Heavy-Duty build with trolley wheels and a telescopic pull handle for mobility
- 900 watt and 75 hp motor
- 3 speeds

# EUREKA'S Revolution in Squeegee Design Just Got Better!

**NOW EVEN BETTER!**

Innovative channel design accepts both Standard and Quad Pro rubber blades

**4 sided rubber doubles blade life**

Ability to use all four edges of the rubber, extending blade life

**NEW**  
Improved fixed plastic end caps with metal locking clips

**NEW**  
Improved quick release mechanism for easier channel change

**NEW**  
Versatile swivel handle rotates 90 degrees, with comfortable rubber grip.

Wide range of Channel sizes ranging from 200mm up to 910mm lengths.



**Double the versatility  
Double the cleaning**

## EUREKA QUAD PRO

Improved features that will revolutionise the way you clean.

- Plastic end clips are now stronger and fixed to the aluminium channel.
- Improved quick release swivel handle with comfortable rubber grip is now more secure and makes changing channels even easier.

Eureka Quad Pro complements our existing range of commercial window cleaning equipment including traditional brass squeegees, soft and heavy duty washers, scrapers, telescopic poles, brushes plus a range of other janitorial equipment.



www.nabclean.com.au



**QUAD PRO CHANNEL AND RUBBER**

CTN QTY: 6

Quad Pro's strong aluminium channel won't bend or warp, accepts both 2 & 4 sided rubbers and contains a built-in rubber locking system. The channels have centre indicators for the quick release swivel handle.

200mm (8")	4508
250mm (10")	4510
300mm (12")	4512
350mm (14")	4514
400mm (16")	4516
450mm (18")	4518
500mm (20")	4520
550mm (22")	4522
610mm (24")	4524
750mm (30")	4530
910mm (36")	4536

**QUAD PRO 4 SIDED REPLACEMENT RUBBER**

CTN QTY: 10

4-Sided Rubbers last longer & save you money!

200mm (8")	5508
250mm (10")	5510
300mm (12")	5512
350mm (14")	5514
400mm (16")	5516
450mm (18")	5518
500mm (20")	5520
550mm (22")	5522
610mm (24")	5524
750mm (30")	5530
910mm (36")	5536



**QUAD PRO HANDE**

CTN QTY: 6

CODE: 4600

Made of tough ABS Plastic, dual spring clamp, ergonomic rubber grip, 90° swivel, fits most poles and holds other aluminium, brass & stainless steel channels!

**QUAD PRO PARTS**

Plastic End Caps—Pair	4620
Metal Clips—Pair	4636

**SILICONE SQUEEGEE BLADE**

CTN QTY: 10

- Smooth streak free clean
- Less affected by temperature than rubber
- Fits our **WS**, **ABCC** and **ASCC** range of squeegees

250mm (10")	SWISR10
350mm (14")	SWISR14
450mm (18")	SWISR18



**BRASS SQUEEGEE COMPLETE**

CTN QTY: 6

- High grade rubber and brass
- Perfect straight edge for maximum results

150mm (6")	ABCC06
200mm (8")	ABCC08
250mm (10")	ABCC10
300mm (12")	ABCC12
350mm (14")	ABCC14
400mm (16")	ABCC16
450mm (18")	ABCC18

**BRASS SQUEEGEE COMPLETE**

CTN QTY: 6

- High grade rubber and brass
- Perfect straight edge for maximum results

150mm (6")	ABCR06
200mm (8")	ABCR08
250mm (10")	ABCR10
300mm (12")	ABCR12
350mm (14")	ABCR14
400mm (16")	ABCR16
450mm (18")	ABCR18

**TWO-SIDED REPLACEMENT RUBBER**

CTN QTY: 6

The secret to the efficiency of these blades lies in their precision square machine cut edges, giving superb streakfree results throughout their life.

150mm (6")	WISR06
200mm (8")	WISR08
250mm (10")	WISR10
300mm (12")	WISR12
350mm (14")	WISR14
400mm (16")	WISR16
450mm (18")	WISR18
500mm (20")	WISR20
550mm (22")	WISR22
1050mm (42")	WISR105



**QUICK RELEASE BRASS HANDLE**

CTN QTY: 6

CODE: QRBH

- Speedy channel change
- Tensioned locking plate
- Able to centre or offset channel for extended reach
- Soft grip

**SOLID BRASS HANDLE**

CTN QTY: 6

CODE: BRAHA

- Solid
- Durable
- High quality handle

**BRASS END CLIPS**

CTN QTY: 6

CODE: BENCL

- 2 Pack
- Solid Brass
- For use with **ABCR's** and **ABCC's**





**STAINLESS STEEL SQUEEGEE'S**

CTN QTY: 10

- Comfortable Quick Release Handle
- Handle locks channel & rubber into place

250mm (10")	<b>ASCC10</b>
350mm (14")	<b>ASCC14</b>
450mm (18")	<b>ASCC18</b>



**WINDOW SQUEEGEE COMPLETE**

CTN QTY: 6

- Solid stainless steel
- Suits most extension poles

250mm (10")	<b>WS10</b>
300mm (12")	<b>WS12</b>
350mm (14")	<b>WS14</b>
400mm (16")	<b>WS16</b>
450mm (18")	<b>WS18</b>



**WINDOW CLEANING KIT**

CTN QTY: 10 CODE: GLSKIT

- Contains a 35cm/14" Washer, Squeegee and microfibre cloth
- Washer contains a blue scrubber for more abrasive cleaning
- Aluminium T-bar with ABS handle
- Replacement washers and rubbers available



**STANDARD YELLOW WASHER COVER WITH SCRUBBER**

CTN QTY: 6

- Thick, water absorbent soft cotton washer
- Non-scratch scrubber loosens tough marks
- Double seamed cover provides greater wear resistance

260mm (10")	<b>SWY10</b>
360mm (14")	<b>SWY14</b>
460mm (18")	<b>SWY18</b>



**PREMIUM MICROFIBRE WASHER COVERS WITH SCRUBBER**

CTN QTY: 6

- Thick, water absorbent soft microfibre washer
- Non-scratch scrubber loosens tough marks
- Double seamed cover provides greater wear resistance

250mm (10")	<b>PW10</b>
360mm (14")	<b>PW14</b>
460mm (18")	<b>PW18</b>
565mm (22")	<b>PW22</b>



**WINDOW WASHER COMPLETE**

CTN QTY: 6

- Complete plastic T-bar and washer combo
- Thick, water absorbent soft cotton washer

250mm (10")	<b>SWCC10</b>
350mm (14")	<b>SWCC14</b>
450mm (18")	<b>SWCC18</b>



**PLASTIC T-BAR**

CTN QTY: 6

- Solid
- Durable
- High quality handle

250mm (10")	<b>WH10</b>
350mm (14")	<b>WH14</b>
450mm (18")	<b>WH18</b>



**ALUMINIUM T-BAR**

CTN QTY: 6

- Strong and durable
- Lightweight
- Ergonomic grip

255mm (10")	<b>AWH10</b>
355mm (14")	<b>AWH14</b>
460mm (18")	<b>AWH18</b>



**ALUMINIUM SWIVEL T-BAR**

CTN QTY: 6

- Strong and durable
- 90 degree swivel
- Comfortable grip

152mm (6")	<b>SWH06</b>
254mm (10")	<b>SWH10</b>
355mm (14")	<b>SWH14</b>
457mm (18")	<b>SWH18</b>
559mm (22")	<b>SWH22</b>
762mm (30")	<b>SWH30</b>
Swivel T Piece	<b>SWTC</b>



**HEAVY DUTY WASHER COVER**

CTN QTY: 6

- Extra thick, water absorbent soft cotton washer

260mm (10")	<b>HWC10</b>
360mm (14")	<b>HWC14</b>
460mm (18")	<b>HWC18</b>



**SOFT WASHER COVER WITH FULL LENGTH SCRUBBER**

CTN QTY: 6

- Full Length non-scratch scourer
- Sewn along back for added versatility

260mm (10")	<b>WSC10</b>
360mm (14")	<b>WSC14</b>
460mm (18")	<b>WSC18</b>



**WINDOW CLEANING KIT WITH BUCKET**

CTN QTY: 8 CODE: GWKB

- 35cm/14" Aluminium T-Bar with ABS handle
- 35cm/14" Soft washer cover with non-scratch scrubber
- 35cm/14" Stainless steel squeegee with quick release handle
- 40 x 40cm Premium glass microfibre cloth
- 11L Window Cleaning Bucket



**GOLD HEAVY-DUTY TELESCOPIC POLE**

CTN QTY: 6

- Manufactured from high-quality fluted aluminium
- Gold anodised to provide a smooth, durable finish
- Versatile end cone will hold just about any attachment

	61-122cm (2-4ft)	TE2P04
	91-183cm (3-6ft)	TE2P06
2 Section	122-244cm (4-8ft)	TE2P08
	183-366cm (6-12ft)	TE2P12
	244-488cm (8-16ft)	TE2P16
	152-457cm (5-15ft)	TE3P15
3 Section	183-549cm (6-18ft)	TE3P18
	200-800cm (6.5-26ft)	TE4P26

**TELESCOPIC POLE SPARE PARTS**

CTN QTY: 6



Replacement grip for 3 section pole	GRIP3
Replacement grip for 2 section pole	GRIP2
Cone and clamp assembly Large—3 Section	CCAL
Cone and clamp assembly Small— 2 Section	CCAS
End Cone for Gold poles —threaded plastic	ECTHP
End Cone for Silver Poles	TLSC



**SILVER TELESCOPIC POLE**

CTN QTY: 6

- Heavy-Duty lightweight aluminium

	2 x 60cm Sections. 1.2 meters	TLS1.2
	2 x 90cm Sections 1.8 meters	TLS1.8
2 Section	2 x 1.5M Sections. 3 meters	TLS3.0
	2 x 1.8M Sections. 3.6 meters	TLS3.6
	3 x 90cm Sections. 2.7 meters	TLS2.7
3 Section	3 x 1.5M Sections. 4.5 meters	TLS4.5
	3 x 1.8M Sections. 5.4 meters	TLS5.4
	3 x 3M Sections. 9 meters	TLS9M



**SMALL SCRAPER WITH SINGLE REPLACEMENT BLADE**

CTN QTY: 24

CODE: NBES

- General purpose scraper
- 1.5" (38mm) blade
- Replacement blades available - 3210



**SMALL WINDOW SCRAPER**

CTN QTY: 25

CODE: SSCP

- Strong plastic build with easy grip handle
- 3.7" (95mm) blade
- Replacement blades available (10 pack) - SSCPB



**WINDOW SCRAPER**

CTN QTY: 10

CODE: SCP

- Strong metal build with easy grip handle
- 4" (100mm) blade
- Replacement blades available (10 pack) - SCPB



**SHORT HANDLE SCRAPER**

CTN QTY: 10

CODE: NBMS

- Heavy-Duty build
- 4" (100mm) blade
- Replacement blades available (10 pack) - NBMSRS



**LONG HANDLE SCRAPER**

CTN QTY: 12

CODE: NBLHS

- 1.2m long handle
- 4" (100mm) blade
- Heavy-Duty chrome plates handle
- Replacement blades available (10 pack) - NBMSRS





**DOME COBWEB BRUSH**

CTN QTY: 1 CODE: RDHBDR

- Soft durable bristles
- Makes easy work of hard to reach spots
- Can be hand held or pole mounted
- Ideal for cobweb and dust removal



**LIGHTWEIGHT SWIVEL BRUSH**

CTN QTY: 1 CODE: SWB14E

- Soft bristles that are arranged to maximise contact area
- Can be hand held or pole mounted
- Ideal for cobweb removal and dusting of overhead pipes



**PIPE DUSTER**

CTN QTY: 20 CODE: PD

- Durable bristles
- Lightweight
- Bendable for hard to get to areas
- Suits most extension poles



**CAR WINDOW SQUEEGEE**

CTN QTY: 24 CODE: CWS

- Solid timber handle
- Head width 25cm - 10"
- Ideal for general purpose use



**PLASTIC WINDOW SQUEEGEE**

CTN QTY: 24 CODE: WSP

- Intergraded blade
- Soft grip handle
- Ideal for various surfaces such as glass, laminate, stainless steel and stone
- 10" (25cm) wide blade



**CEILING DUSTER**

CTN QTY: 10 CODE: CD

- Durable bristles
- Lightweight
- Large triangular shaped head for larger areas
- Suits most extension poles



**11L WINDOW CLEANING BUCKET**

CTN QTY: 20 CODE: WCB-B

- Chemical resistant plastic
- Ergonomic handle
- Lightweight
- Suits 14" squeegees and washers
- H.19 x L.42 x W.23cm



**22L BUCKET ON WHEELS**

CTN QTY: 5 CODE: BOW

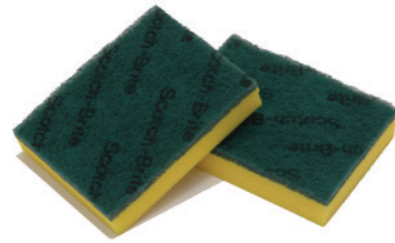
- Heavy-duty castors
- Ergonomic handle
- Washer scrubbing grid included



**SCOTCH-BRITE 75 GREEN HEAVY DUTY SCOURER**

CTN QTY: 50 CODE: 75-3M

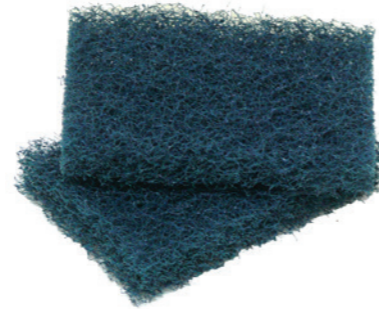
- The heavy duty cleaning power of this scourer makes for light work when cleaning grease, grime and baked-on foods
- Open weave construction for easy cleaning
- 175 x 125mm



**SCOTCH-BRITE 630 AQUA SPONGE SCOURER**

CTN QTY: 30 CODE: 630-3M

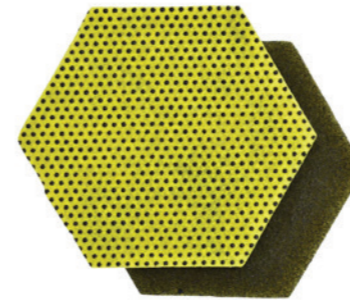
- Medium Duty
- For general scouring use
- 150 x 115mm
- NAB Alternative: **NBSS**



**SCOTCH-BRITE 88 BLUE POT 'N PAN SCOURER**

CTN QTY: 10 CODE: 88-3M

- The hardest working pad available
- The most stubborn deposits are scoured clean
- Ideal replacement for stainless steel wool and metal scourers
- Open weave construction for easy cleaning
- 125 x 90mm



**3M 96HEX PAD**

CTN QTY: 15 CODE: 96HEX

**One Pad, Two Tasks**

Features a yellow raised power dot side that aggressively scours away tough messes with less elbow grease.

Smooth grey side scours away fine particles and grease, leaving a clean and shiny surface.

Use for general purpose cleaning, including:

- Pots and pans
- Cooking appliances and utensils
- Kitchen and maintenance equipment
- Stainless steel



**3M GRILL-BRICK™ GRILL CLEANER**

CTN QTY: 12 CODE: GB12-3M

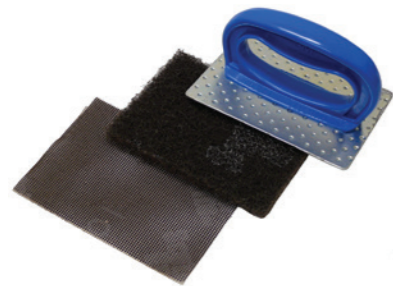
- Specially compounded to disintegrate during use to expose an unused surface
- 9 x 9 x 20cm



**3M STAINLESS STEEL CLEANER AND POLISH 600G**

CTN QTY: 12 CODE: SSC-3M

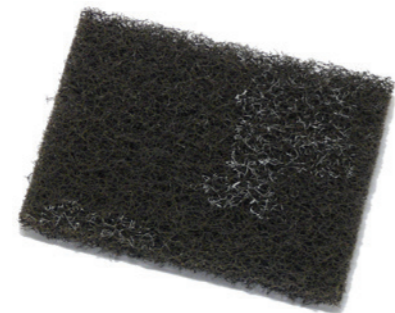
- Cleans and polishes in one easy operation
- Resists fingerprints and masks surface blemishes on stainless steel, chrome, architectural aluminium and laminated plastic
- HACCP certified
- Available in 600g aerosol



**3M GRIDDLE CLEANING SYSTEM**

CTN QTY: 1 CODE: 461-3M

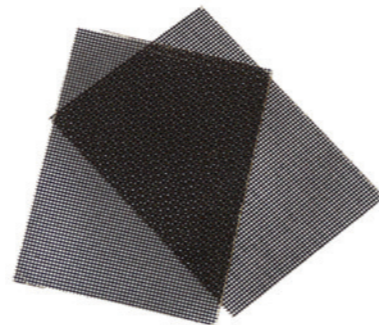
- Three part system consisting of holder, pad and screen
- Scrape debris with scraper, clean griddle with screen and polish with pad
- Effectively removed carbonised grease and food debris, and polishes the surface to make food stick less in the future.



**3M GRIDDLE POLISHING PAD**

CTN QTY: 20 CODE: 46-3M

- This premium quality pad offers a fast and effective polishing power on griddles and hot plates
- 101 x 133mm
- Use with the 3M Griddle cleaning system (**461-3M**)



**3M GRIDDLE CLEANING SCREEN**

CTN QTY: 200 CODE: 200-3M

- Designed for heavy duty cleaning and removal of carbonized grease and food build-up on flat top griddles.
- 101 x 133mm
- 20 per pack
- Use with the 3M Griddle cleaning system (**461-3M**)



**3M GLASS AND LAMINATE CLEANER - 500G**

CTN QTY: 12 CODE: GLS-3M

- Cleans glass and laminate surfaces quickly and easily without smearing or streaking
- Ideal for cleaning windows, glazed ceramics, baked enamel and laminated finishes
- HACCP certified
- Available in 500g aerosol



**DOODLEBUG PADS**

CTN QTY: 20

- An efficient, durable and versatile cleaning system
- 254 x 117mm
- NAB Alternative: **PFTP**

White	Cleaning	<b>8440-3M</b>
Red	Cleaning	<b>8243-3M</b>
Blue	Scrubbing	<b>8242-3M</b>
Brown	Scrub' n Strip	<b>8541-3M</b>
Black	Heavy Duty	<b>8245-3M</b>
Dark Grey	High Productivity Stripping	<b>8550-3M</b>



**SCOTCH-BRITE CLEAN & SHINE PAD**

CTN QTY: 5 CODE: CASP-3M

- Cleans and shines in the same step, using only a low-speed scrubber
- Save costs and labour by reducing or eliminating the need to burnish
- Removes black marks 3 times faster than traditional cleaning pads
- Two-sided pad lasts longer than traditional cleaning pads
- Available in various sizes



## 3M Range



### 3M SUPER POLISHING PAD

CTN QTY: 5 CODE: 4100

- For buffing very soft finishes
- Used for cleaning, removes scuffs and black heel marks
- Can be used to polish wood floors, spray cleaning or dry buffing soft finishes
- Available in various sizes
- NAB Alternative: **FP W**



### 3M RED BUFFER PAD

CTN QTY: 5 CODE: 5100

- To remove scuffs and black heel marks
- Cleans when damp, buffs when dry
- Specially designed for spray buffing
- Low speed 175-600RPM
- Available in various sizes
- NAB Alternative: **FP R**



### 3M BLUE CLEANER PAD

CTN QTY: 5 CODE: 5300

- For heavy-duty scrubbing prior to recoating
- Provides fresh new surface to maintain
- Low speed 175-600RPM
- Available in various sizes
- NAB Alternative: **FP B**



### 3M BROWN STRIPPER PAD

CTN QTY: 5 CODE: 7100

- To remove all finish, sealer and contaminants from the floor surface
- Done at the start of the maintenance program and at times when scrubbing will not achieve the desired results
- For wet or dry stripping
- Low speed 175-600RPM
- Available in various sizes
- NAB Alternative: **FP BR**



### 3M BLACK STRIPPER PAD

CTN QTY: 5 CODE: 7200

- The industry standard against which all other stripping pads are compared
- Maintains consistent high performance throughout the life of the pad
- To remove all finish, sealer and contaminants from the floor surface
- Low speed 175-600RPM
- Available in various sizes
- NAB Alternative: **FP BL**



### 3M HIGH PRODUCTIVITY PAD

CTN QTY: 5 CODE: 7300

- Unique, open web construction - stripping solution flows through pad to rinse out dirt and reduce loading for increased pad-to-floor contact.
- For heavy finish build-up, quick stripping and stain removal
- Low speed 175-600RPM

## Other



### LARGE GRIPPER 100CM

CTN QTY: 10 CODE: SGRIPLG

- Safely collects dangerous objects
- Lightweight aluminium pole
- Rubber tips for extra grip



### MULTI-PURPOSE HOLDER

CTN QTY: 24 CODE: MPH

- Ideal for all storage needs
- Easy wall mounting
- Holds up to 11 items



### BLUE DETECTABLE PLASTIC BANDAGES

CTN QTY: 80 PACKS CODE: NABBAND

- Electro-magnetic detection makes it ideal for the Food Industry
- Hypoallergenic adhesive
- Ventilation holes promote air circulation to skin and wound
- Extra long pad give greater coverage of wound
- 100 sterile strips per pack
- 25 x 72mm



### WIPES ROLL DISPENSER

CTN QTY: 1 CODE: HDWD

- Heavy-Duty steel construction
- Powder coated to prevent rusting
- Suits most rolls



### REPLACEMENT BROOM FOR LDPU AND MLDP

CTN QTY: 24 CODE: LDPUB

- Quality heavy-duty brush
- Aluminium handle
- Lightweight
- Black Colour



### FLOOR SQUEEGEE/ BROOM BRACKET

CTN QTY: 100 CODE: BRACKET

- Great for strengthening handled brooms or floor squeegees
- Metal

Due to the size of the range only a small portion has been shown.  
If you have any enquiries regarding 3M items not found listed please don't hesitate to contact us



## SHIPPING AUSTRALIA WIDE

ADELAIDE | BRISBANE | CANBERRA | DARWIN | HOBART | MELBOURNE | PERTH | SYDNEY

Your authorised distributor is: